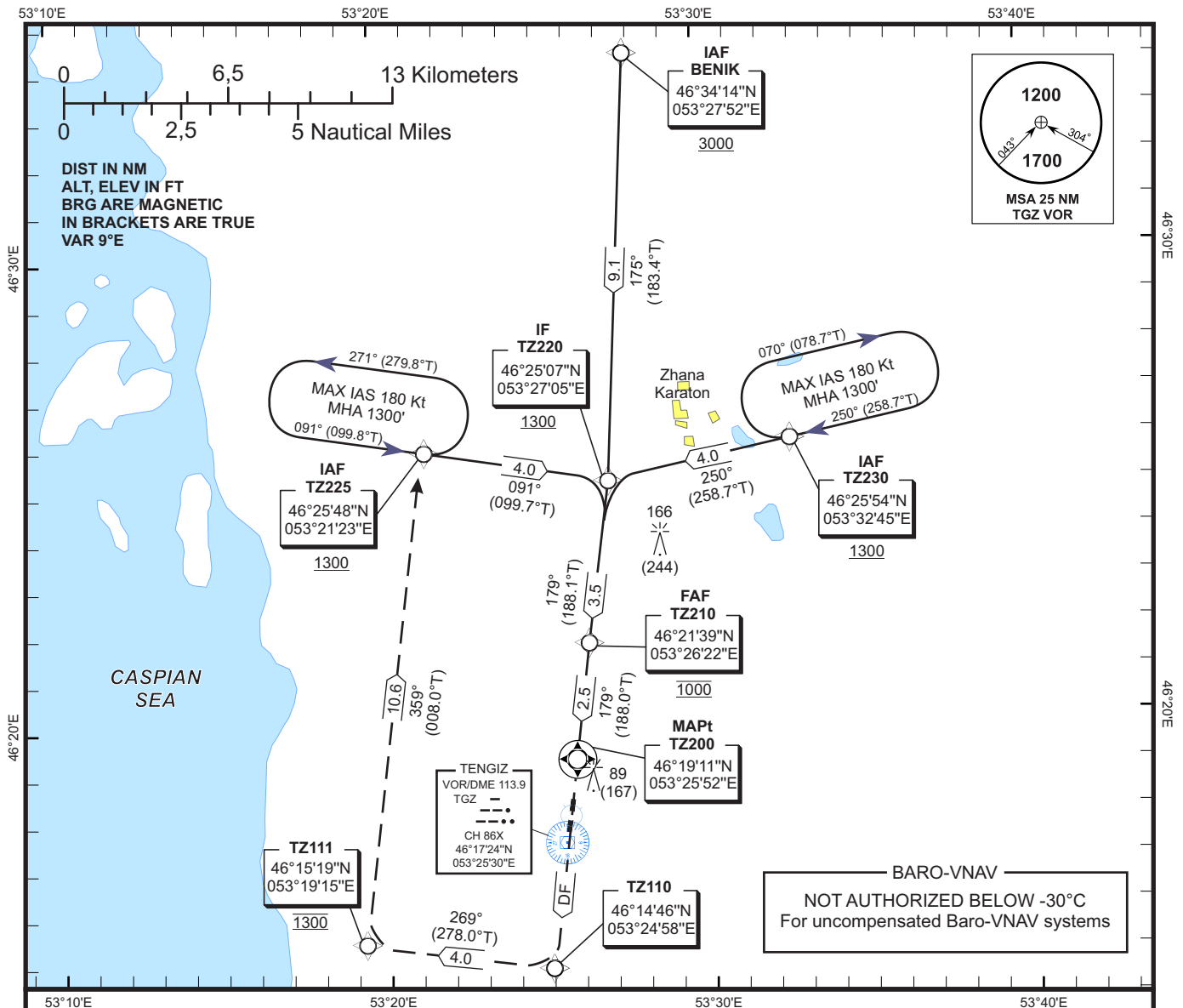


INSTRUMENT
APPROACH
CHART - ICAO

AERODROME ELEV -78 FT
HEIGHTS RELATED TO
THR RWY 18 ELEV -77 FT

TENGIZ TOWER 119.20

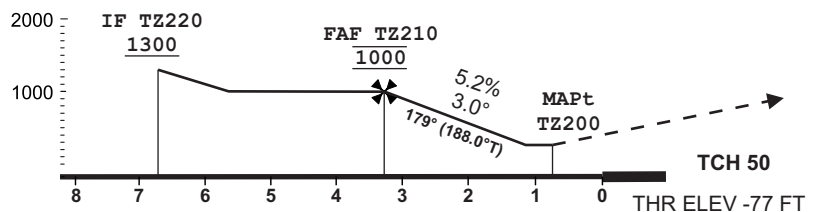
TENGIZ
RNP RWY 18



MISSED APPROACH:

DF TZ110 CLIMB 700 FT or above,
TURN RIGHT TF TZ111 continue
CLIMB 1300 FT, TURN RIGHT TF TZ225.

TRANSITION ALT 10000 FT



Aircraft Cat.	A	B	C	D
LNAV OCA (OCH)	250 (328)			
LNAV VNAV OCA (OCH)	219 (296)	231 (308)		

GS	Kt	80	100	120	130	140
Rate of descent	ft/min	428	535	642	695	749
FAF - MAPt (2.5 NM)	min:s	1:53	1:30	1:15	1:09	1:04
DES Gradient 5.2%						

CHANGE: New Procedure.

RNP APPROACH RWY 18

TABULAR DESCRIPTION

TZ225											
Serial Number	Path Descriptor	Waypoint Identifier	Fly-Over	Course °M (°T)	Magnetic Variation (°)	Distance NM	Turn Direction	Altitude FT	Speed KT	VPA (°)	Navigation Specification
010	IF	TZ225	-	-	9	-	-	+1300	-180	-	RNP APCH
020	TF	TZ220	-	091 (099.7)	9	4.0	-	+1300	-180	-	RNP APCH
030	TF	TZ210	-	179 (188.1)	9	3.5	R	@1000	-	-	RNP APCH
040	TF	TZ200	+	179 (188.0)	9	2.5	-	-	-	-3.0	RNP APCH
050	DF	TZ110	-	-	9	-	-	+700	-	-	RNP APCH
060	TF	TZ111	-	269 (278.0)	9	4.0	R	@1300	-	-	RNP APCH
070	TF	TZ225	-	359 (008.0)	9	10.6	R	@1300	-	-	RNP APCH

TABULAR DESCRIPTION

BENIK											
Serial Number	Path Descriptor	Waypoint Identifier	Fly-Over	Course °M (°T)	Magnetic Variation (°)	Distance NM	Turn Direction	Altitude FT	Speed KT	VPA (°)	Navigation Specification
010	IF	BENIK	-	-	9	-	-	+3000	-	-	RNP APCH
020	TF	TZ220	-	175 (183.4)	9	9.1	-	+1300	-	-	RNP APCH
030	TF	TZ210	-	179 (188.1)	9	3.5	-	@1000	-	-	RNP APCH
040	TF	TZ200	+	179 (188.0)	9	2.5	-	-	-	-3.0	RNP APCH
050	DF	TZ110	-	-	9	-	-	+700	-	-	RNP APCH
060	TF	TZ111	-	269 (278.0)	9	4.0	R	@1300	-	-	RNP APCH
070	TF	TZ225	-	359 (008.0)	9	10.6	R	@1300	-	-	RNP APCH

TABULAR DESCRIPTION

TZ230											
Serial Number	Path Descriptor	Waypoint Identifier	Fly-Over	Course °M (°T)	Magnetic Variation (°)	Distance NM	Turn Direction	Altitude FT	Speed KT	VPA (°)	Navigation Specification
010	IF	TZ230	-	-	9	-	-	+1300	-180	-	RNP APCH
020	TF	TZ220	-	250 (258.7)	9	4.0	-	+1300	-180	-	RNP APCH
030	TF	TZ210	-	179 (188.1)	9	3.5	L	@1000	-	-	RNP APCH
040	TF	TZ200	+	179 (188.0)	9	2.5	-	-	-	-3.0	RNP APCH
050	DF	TZ110	-	-	9	-	-	+700	-	-	RNP APCH
060	TF	TZ111	-	269 (278.0)	9	4.0	R	@1300	-	-	RNP APCH
070	TF	TZ225	-	360 (007.9)	9	10.6	R	@1300	-	-	RNP APCH

WAYPOINT LIST

Waypoint Identifier	Coordinates
TZ225 (IAF)	46°25'48"N 053°21'23"E
BENIK (IAF)	46°34'14"N 053°27'52"E
TZ230 (IAF)	46°25'54"N 053°32'45"E
TZ220 (IF)	46°25'07"N 053°27'05"E

Waypoint Identifier	Coordinates
TZ210 (FAF)	46°21'39"N 053°26'22"E
TZ200 (MAPt)	46°19'11"N 053°25'52"E
TZ110	46°14'46"N 053°24'58"E
TZ111	46°15'19"N 053°19'15"E

Holding Point	Inbound Track °True	Inbound Track °MAG	Turn Direction	MAX IAS	Minimum Holding Altitude FT MSL / FL	Time	DIST NM	Remarks
TZ225	099.8°	091°	Left	180	1300	1 MIN	-	
TZ230	258.7°	250°	Right	180	1300	1 MIN	-	